



CRYSTAL CAR PARKING[®]

CRYSTAL CLEAR PARKING SOLUTION

 info@crystalcarparking.in

 crystalcarparking.in



- Modern Mechanical Parking Systems

- Space Saving Parking Solutions

- Vertical Parking Systems for Urban Spaces

- Efficient Parking for Every Project

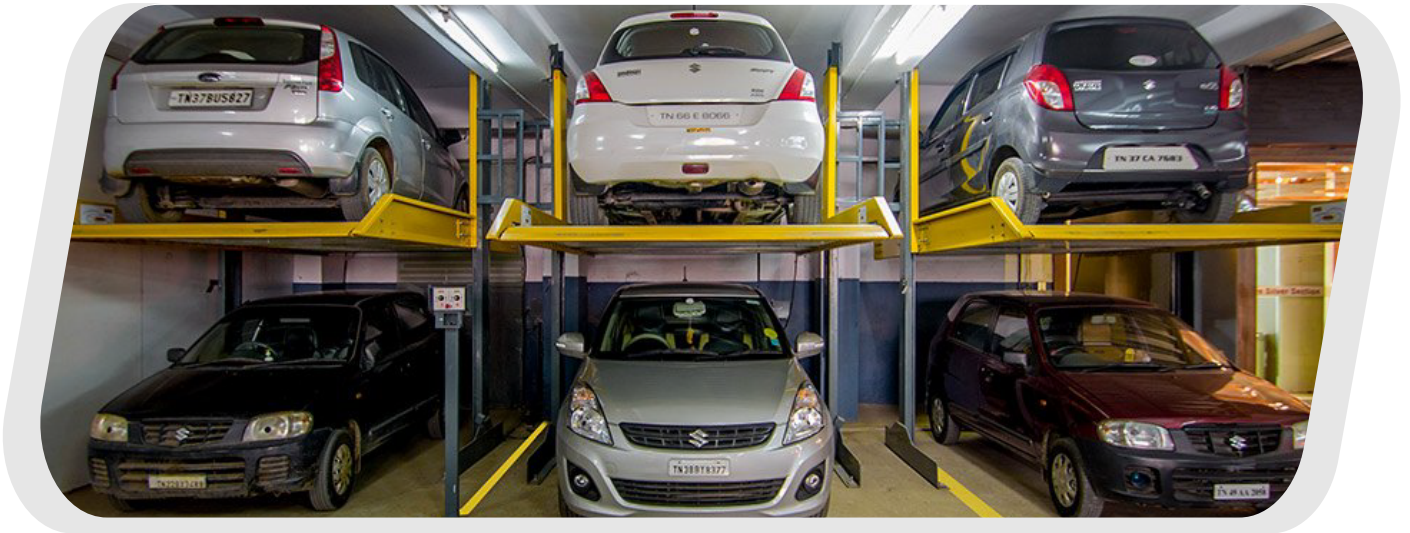
- Innovative Stack Parking Solutions

- Compact Parking

- Maximum Capacity

ABOUT OUR COMPANY

we specialize in providing advanced systems designed to optimize parking space and improve vehicle management in urban environments.



4 WHEELER PARKING SYSTEM

We offer a range of smart mechanical parking systems tailored to your space and project requirements.



Pit Parking System



2 Level Stack Parking



3 Level Stack Parking

2 WHEELER PARKING SYSTEM

we specialize in providing advanced a systems designed to optimize parking space and improve vehicle management in urban environments.



Bike Parking

FEATURES OF OUR STACK PARKING SYSTEMS

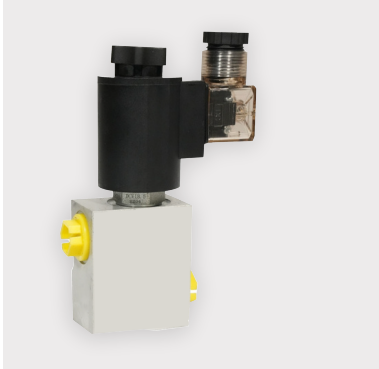
Our systems are engineered for performance, safety, and long-term reliability.

- Heavy-Duty Steel Structure
- Hydraulic / Mechanical Operation
- Smooth & Reliable Performance
- User-Friendly Controls
- Safety Locks & Sensors
- Anti-Corrosion Coating
- Low Noise Operation
- Space-Saving Design
- Strong Load Capacity
- Durable & Weather-Resistant Finish



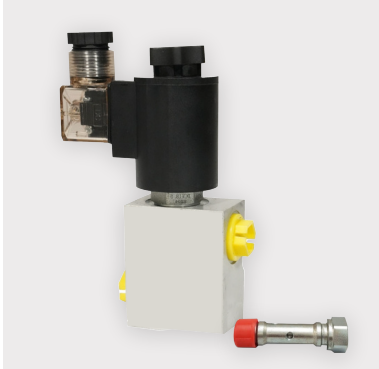
HYDRAULIC POWER PACK AND CYLINDERS

HYDRAULIC SOLENOID CHECK VALVE



Poppet Type: Single/ Double
Flow: 15-40 LPM
Pressure: 300 Bar
Cpoi Voltage: AC 220V, DC12V, 24V
Model:DCV 18.5

HYDRAULIC SOLENOID CHECK VALVE WITH FILTER



Poppet Type: Single/ Double
Flow: 15-40 LPM
Pressure: 300 Bar
Cpoi Voltage: AC 220V, DC12V, 24V
Model:DCV 18.5

HYDRAULIC SUBMERSIBLE POWERPACK SINGLE/ MULTI- STACK



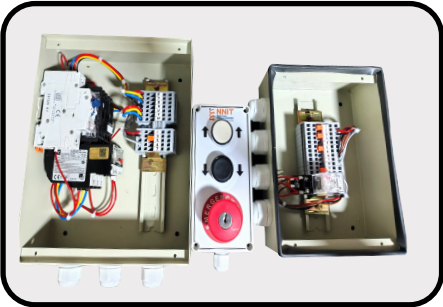
Torque Compact Powepack are time tested and most reliable powerunit in market
Motor: HP: 1-5HP
Flow: 2-45LPM
Pressure: 220Bar
Tank Size: 12/20/35 upto 2000Ltr

HYDRAULIC CYLINDERS



Load Capacity: 2.5 Ton to 12 Ton
Maximum Pressure: 280 Bar
Working Pressure: 160 Bar

SAFETY FEATURES



Controller , Switchboard & junction Box



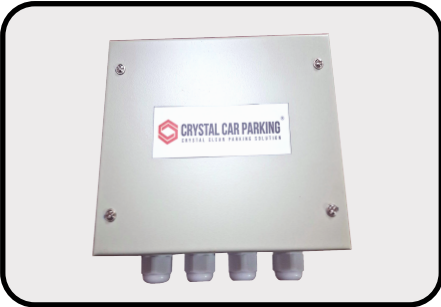
Limit Switch



Sefty Limit Switch



Haydronic Control Panal



junction Box



Key Switch



Sefty Lock

CANTILEVER STACK PARKING

A Cantilever Stack Parking System is a smart mechanical parking solution designed to maximize parking capacity in limited spaces. In this system, vehicles are parked on elevated platforms supported by a strong cantilever structure, allowing multiple cars to be stacked vertically without occupying extra ground area.



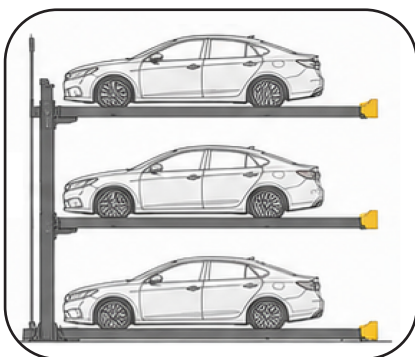
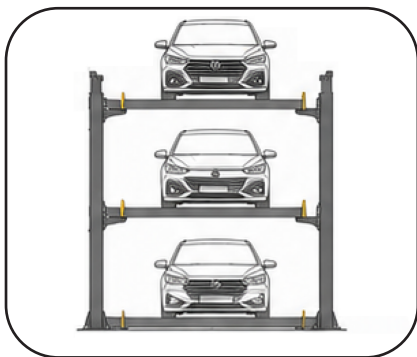
SIDE VIEW



SUV-Stack Parking



Sedan-Stack Parking



PIT PARKING



CRYSTAL CAR PARKING[®]

CRYSTAL CLEAR PARKING SOLUTION

Office No. 10, Sahara Sankalp Residency,
Plot No-16, Sector-2A, Karanjade, Panvel, Navi Mumbai-410206

+91 98190 20200

info@crystalcarparking.in

crystalcarparking.in